

ITEM NO.: TK-02201A/B
 NAME: FIRE WATER TANK
 SIZE/TYPE: 10500mm LD. x 15000mm
 DESIGN CONDITIONS: ALVOS @ 85°C
 OPERATING CONDITIONS: ALVOS
 CAPACITY/DUTY: 1200m³

ITEM NO.: TK-01801A/B
 NAME: OIL FLASH/OFF-SPEC OIL TANKS
 SIZE/TYPE: 14800 mm LD. x 12840mm -INTERNALLY COATED
 DESIGN CONDITIONS: 0.0025MPa(g) / -0.005MPa(c) @ 85°C
 OPERATING CONDITIONS: ALVOS @ 60-65°C
 CAPACITY/DUTY: 2000m³

ITEM NO.: V-02201
 NAME: BARBER DUMPHIGH-TYPE PRESSURIZED WATER TANK
 SIZE/TYPE: 12000mm LD. x 2400mm
 DESIGN CONDITIONS: 1.2MPa(g) @ 85°C
 OPERATING CONDITIONS: 1.0MPa(g) @ 40°C
 CAPACITY/DUTY: 180m³

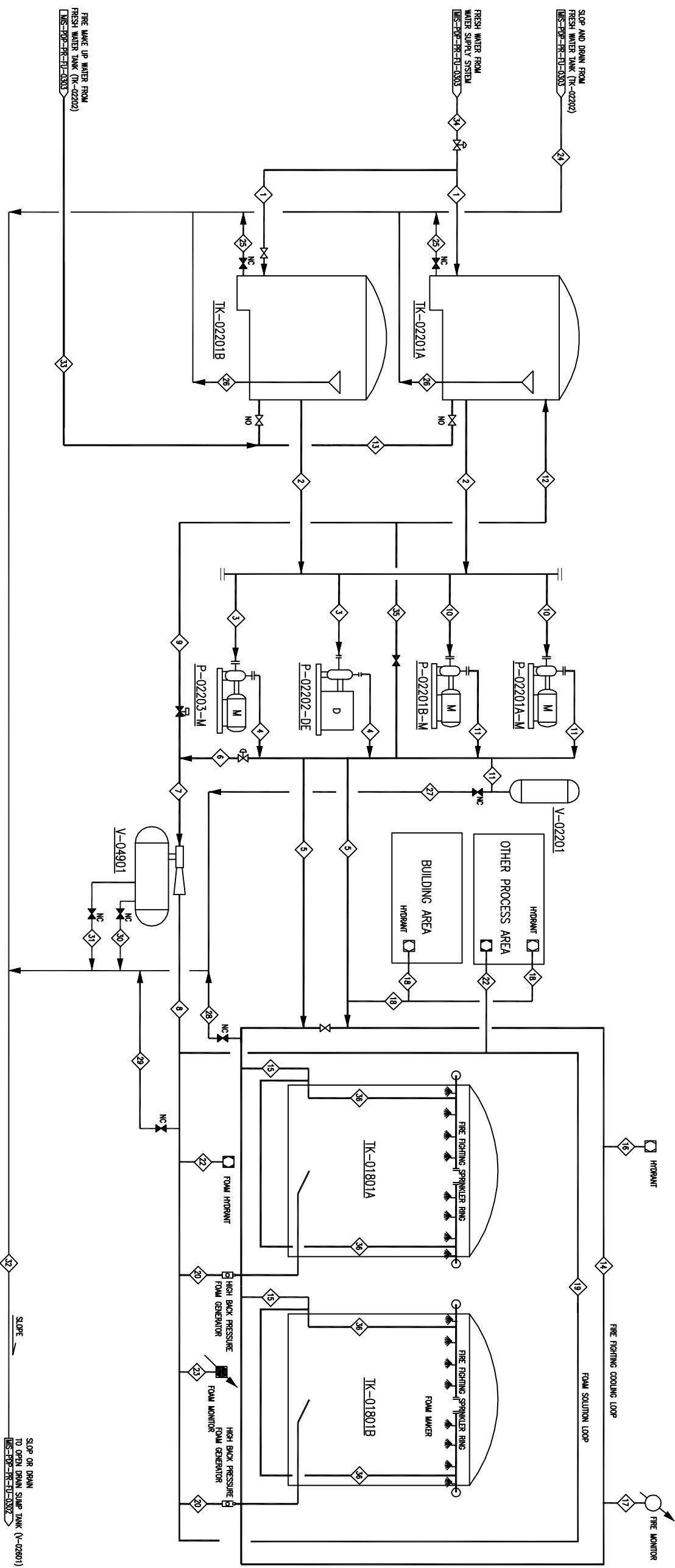
ITEM NO.: V-04901
 NAME: FOAM PROPORTIONING UNIT
 SIZE/TYPE: 1.3MPa(g) @ 85°C
 OPERATING CONDITIONS: 1.0 MPa(g) @ 40°C
 CAPACITY/DUTY: 4RL/s, 10m³

ITEM NO.: P-02201A/B-M
 NAME: JOCKEY PUMP
 CAPACITY: 15m³/h
 HEAD: 100m
 POWER: 11kW
 (ONE DUTY, ONE STANDBY)

ITEM NO.: P-02202-DE
 NAME: DIESEL DRIVEN FIREWATER PUMP
 CAPACITY: 340m³/h
 HEAD: 100m
 POWER: 160kW
 (STANDBY)

ITEM NO.: P-02203-M
 NAME: ELECTRICAL DRIVEN FIREWATER PUMP
 CAPACITY: 340m³/h
 HEAD: 100m
 POWER: 160kW
 (DUTY)

DATE	SIGNATURE	DISCIPLINES



No.	MEDIUM	1	2	3	4	5	6	7	8	9	10	11	12	13	14	15	16	17	18
		FRESH WATER	FIRE WATER	FIRE WATER	FIRE WATER	FIRE WATER	FIRE WATER	FIRE WATER	EST FOWM SOLUTION	EST FOWM SOLUTION	RECYCLE	FRESH WATER	FOAM SOLUTION	FIREWATER SUPPLEMENT	FRESH WATER	FIRE WATER	FIRE WATER	FIRE WATER	FIRE WATER
		MPa(g)	0.2	0.02-0.1	1.0	1.0	1.0	1.0	1.0	1.0	0.02-0.1	1.0	1.0	0.02-0.1	0.8	0.8	1.0	0.8	0.8
		°C	10-40	10-40	10-40	10-40	10-40	10-40	10-40	10-40	10-40	10-40	10-40	10-40	10-40	10-40	10-40	10-40	10-40
		DESIGN FLOW RATE	m³/h	30	322	322	322	137	137	0-322	15	15	15	190	185	114	72	162	144

No.	MEDIUM	19	20	22	23	24	25	26	27	28	29	30	31	32	33	34	35	36
		EST FOWM SOLUTION	EST FOWM SOLUTION	EST FOWM SOLUTION	EST FOWM SOLUTION	EST FOWM SOLUTION	SLOP OR DRAIN	SLOP OR DRAIN	SLOP OR DRAIN	SLOP OR DRAIN	FOAM DRINK	FOAM DRINK	SLOP OR DRAIN	SLOP OR DRAIN	FRESH WATER	FRESH WATER	FIRE WATER	FIRE WATER
		MPa(g)	0.8	0.7	0.8	0.8	0.01	0.01	0.01	0.01	0.01	0.01	0.01	0.01	0.02-0.1	0.2	1.0	0.8
		°C	10-40	10-40	10-40	10-40	10-40	10-40	10-40	10-40	10-40	10-40	10-40	10-40	10-40	10-40	10-40	10-40
		DESIGN FLOW RATE	m³/h	108	28.8	128	40	40	30	5	5	2	2	40	300	60	0-15	57

DRAWING NO. REFERENCE DRAWINGS

REV.	DATE	DESCRIPTION	BY	CHECKED	REVIEWED	APPROVED	SCALE	PHASE
00	Nov.10.2008	APPROVED FOR CONSTRUCTION	U. Zhang	Tao XM.	U. Fan	Jin Y.A.	~	DETAIL DESIGN

MIS OIL FIELD DEVELOPMENT PROJECT

PU & DP
UTILITY FLOW DIAGRAM
FIRE FIGHTING SYSTEM

CONTRACT No.: MIS-PDP-FR-FU-0304

SHEET: 1 of 1

SIZE: A3

REV: 00

CLIENT: CNPC/NEPCO

CLIENT: CNPC SICHUAN PETROLEUM

DRWG. No.: MIS-PDP-FR-FU-0304

1	2	3	4	5	6	7	8
---	---	---	---	---	---	---	---