

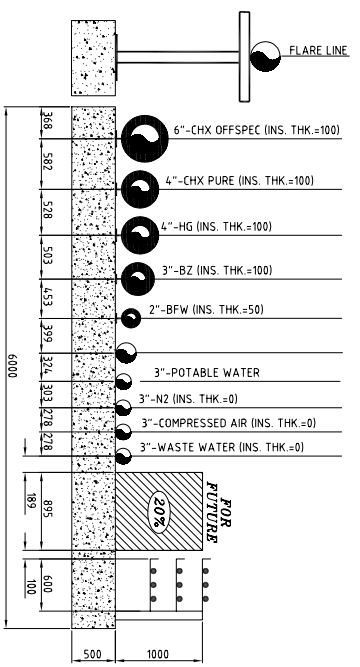
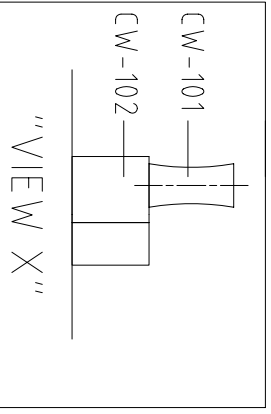
ROAD

E= 316476.106  
N= 3374900.418

85.919

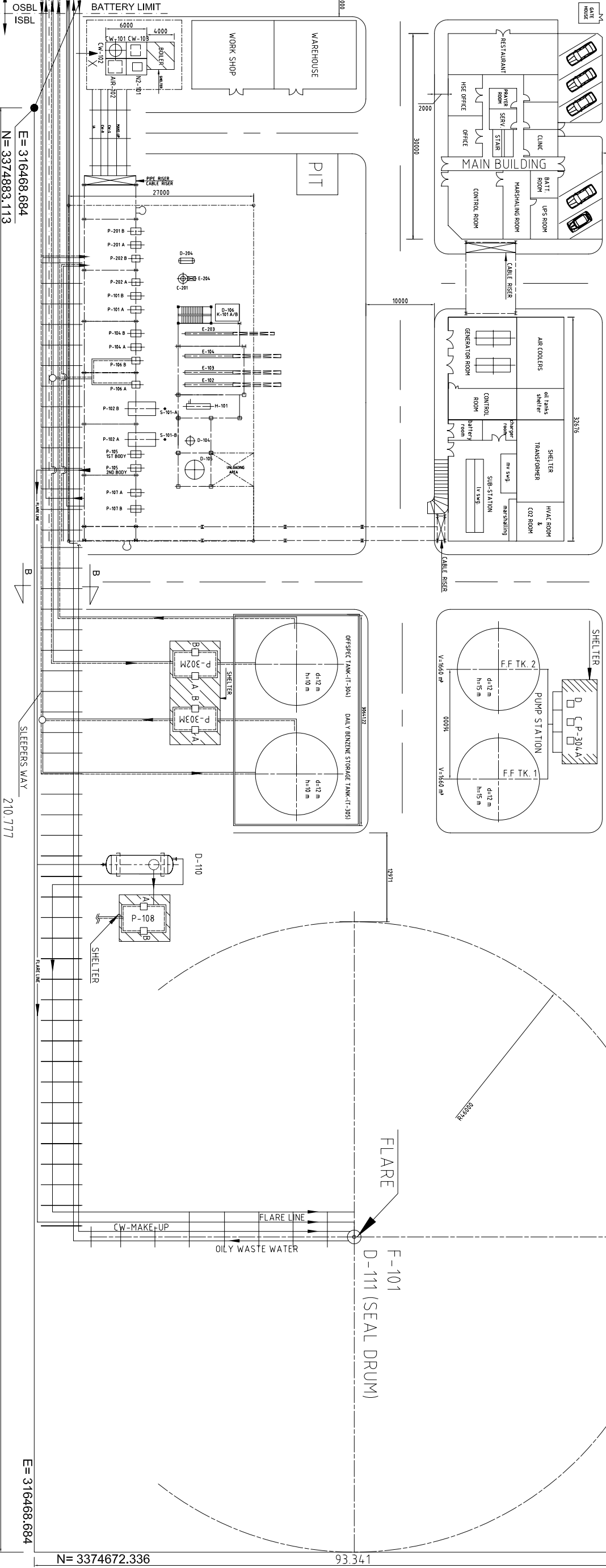
N

CORRIDOR



ROAD & UTILITY CORRIDOR

- BATTERY LIMIT: TIE-IN AND TIE-OUT POINT**
- 1 BZ, 6 barg, T = 30 °C, 13 m<sup>3</sup>/h, 3"
  - 2 HG, 22 barg, T = 30 °C, 10,300 Nm<sup>3</sup>/h, 4"
  - 3.1 EL, Power, 6.6 kV, 2000 kVA
  - 3.11 + 3.15 Waste Water normal, 3.5 barg, T = 45 °C, 3"
  - 3.13 Potable Water normal, 3.5 barg, T = 45 °C, 3"
  - 3.14 Natl. Gas, 5.9 barg, T = 30 °C, 6 m<sup>3</sup>/h, DN 300
  - 3.16 N2, 2.9 barg, T = 30 °C, 1,400 Nm<sup>3</sup>/h, 3" ?
  - 3.17 Compressed Air, 3.7 barg, T = 30 °C, 750 Nm<sup>3</sup>/h, 3"
  - 3.2 + 3.3 BF-W, 10 barg, T = 30 °C, 1.5 m<sup>3</sup>/h, 2"
  - 3.9 Waste Water Oily, 0 barg, T = amb, canal
  - 4.2 CHX offspec, 9 barg, T = 30 °C, 80 m<sup>3</sup>/h, 6"
  - 4.1 CHX pure, 6 barg, 15 °C, 16 m<sup>3</sup>/h, 4"
  - X Cooling Water Make-up



228.082

E= 316662.025

N= 3374672.336

93.341

E= 316468.684