

GENERAL NOTES

- 1 - INSTALLATION OF MAINLINE AT PUMP DISCHARGE TO BE DEFINED BY VENDOR.
- 2 - ANOCCULAR OUTLET TEMPERATURE WILL BE CONTROLLED BY WINDING FAN. BLADE PITCH, SIZE OF FAN SHALL BE PROVIDED BY VENDOR FROM FACILITY.
- 3 - COMMON ASSEMBLY ROOM LOCATED NEAR THE AIR COOLERS.
- 4 - COMMON ASSEMBLY ROOM LOCATED NEAR THE AIR COOLERS.
- 5 - MOTOR SIGNAL IS WILL BE ACCORDING TO TYPE 3 IN DISPEND & SYMBOL. (TYPICAL SYMBOLS FOR MOTOR SIGNAL).

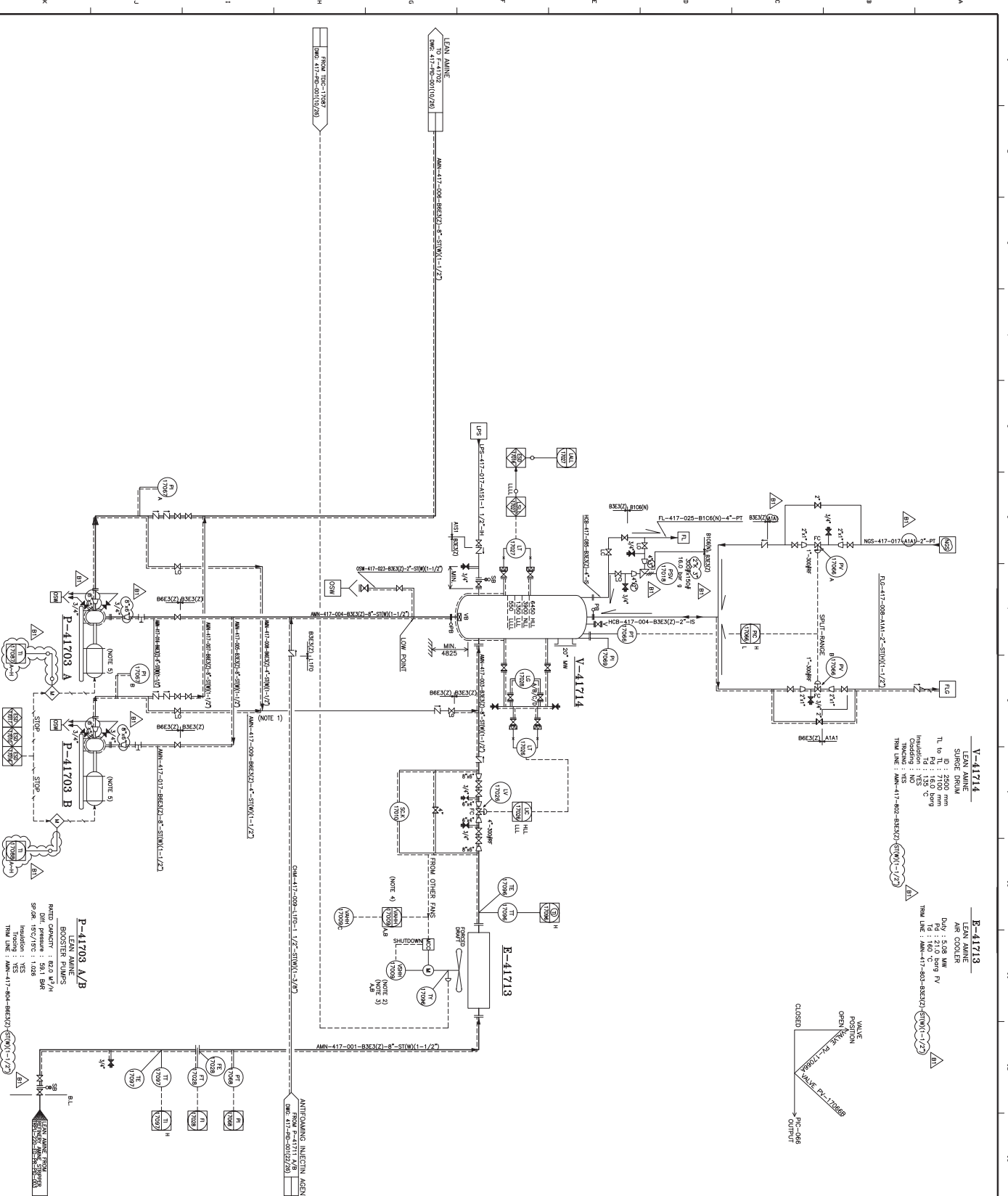
NOTES

DETAILS

REFERENCE DOCUMENTS

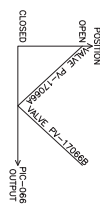
REF ID	DOC NO.
PRO FOR GAS OIL UNIT	TRN-417-ED-PR-PRC-001
PANEL SYMBOLS AND LEGENDS	TRN-00-CD-PR-PRC-001

CONTRACT NO.	NTS/DC-00/CON-PRC-00	SHEET:	13 OF 28	SCALE:	NTS
DOC. NO.				SIZE:	A1 B1



**V-41714**  
LEAN AMINE SURGE DRUM  
ID : 2500 mm  
TL to Pd : 16.0 barg  
Insulating : 50 mm  
Cladding : NS  
TRM LINE : AN-417-802-BEX(C)-ST(W)-1/2/3

**E-41713**  
LEAN AMINE AIR COOLER  
Duty : 5.08 MW  
Pd : 21.0 barg PV  
Insulating : 50 mm  
Cladding : NS  
TRM LINE : AN-417-802-BEX(C)-ST(W)-1/2/3



**P-41703 A/B**  
LEAN AMINE BOOSTER PUMPS  
RATED CAPACITY : 82.0 M<sup>3</sup>/H  
DNF. Pressure : 39.1 BAR  
SPEED : 1570 RPM  
TRM LINE : AN-417-802-BEX(C)-ST(W)-1/2/3

**P-41708 A/B**  
LEAN AMINE BOOSTER PUMPS  
RATED CAPACITY : 82.0 M<sup>3</sup>/H  
DNF. Pressure : 39.1 BAR  
SPEED : 1570 RPM  
TRM LINE : AN-417-802-BEX(C)-ST(W)-1/2/3

ANTIFOAMING INJECTION AGENT FROM P-41711 A/B