

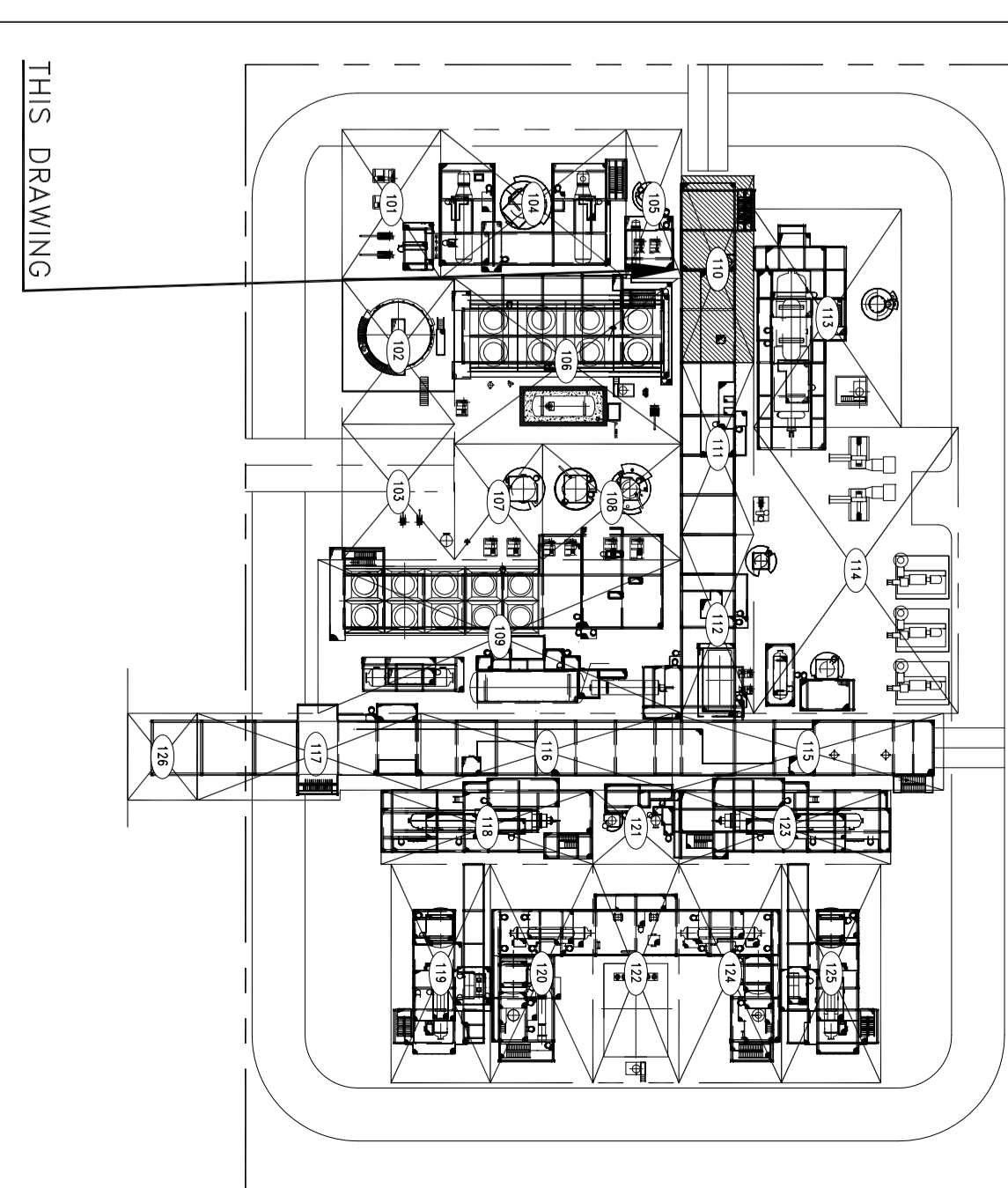
PLAN EL. 65500 TO 68000
 (FOR LOWER PLAN SEE DWG. NO. DW-SP19-108-1320-1010 SH. 2/3)

- GENERAL NOTES**
- 1- ALL DIMENSIONS AND COORDINATES ARE IN MM.
 - 2- ALL COORDINATES = PLANT COORDINATES
 - 3- ALL ELEVATION ARE IN MM AND ARE REFERRED TO 0.0 MM (A.M.S.L.)
 - 4- WHEN THERE IS A DISCREPANCY BETWEEN DIMENSIONS & PIPING PLAN ISOMETRICS WILL GOVERN
 - 5- ALL TERMINATED PIPES TO EQUIPMENT NOZZLES AS WELL AS INSTRUMENTATIONS
 - 6- ALL INSTRUMENTATIONS USING VENDORS DATA
 - 7- ROTARY EQUIPMENTS AND AIR COOLERS ARE UNDER HOLD.
 - 8- TOS = TOP OF STEEL.
 - 9- TOC = TOP OF CONCRETE
 - 10- TP = PLAN FORM
 - 11- WF = WORKING POINT

REFERENCE DRAWINGS

| | |
|------------------------------|-----------------------|
| DWG. NO. | DWG. NO. |
| 1- UNIT PLOT PLAN | DW-SP19-108-0060-1001 |
| 2- PIPING PLAN DRAWING INDEX | DW-SP19-108-1310-1001 |

KEY PLAN



| REV | DATE | DESCRIPTION | ORIG. | CHKD. | APPR. | APPROVED |
|-----|----------|----------------------------|----------------|--------|--------|----------------|
| 1 | 19-04-21 | APPROVED FOR CONSTRUCTION | MARJAN HANJALI | SHARAF | SHARAF | MARJAN HANJALI |
| 0 | 3-04-21 | ISSUED FOR INSTRUMENTATION | MARJAN HANJALI | SHARAF | SHARAF | MARJAN HANJALI |

SOUTH PARS GAS FIELD DEVELOPMENT
PHASE 19, TOMBAK-IRAN
ONSHORE FACILITIES
N.I.O.C.
PARS OIL AND GAS COMPANY

CONTRACT No.: POGC-655-88-35
 DDC. CLASS: 3
 SCALE: 1/33.33

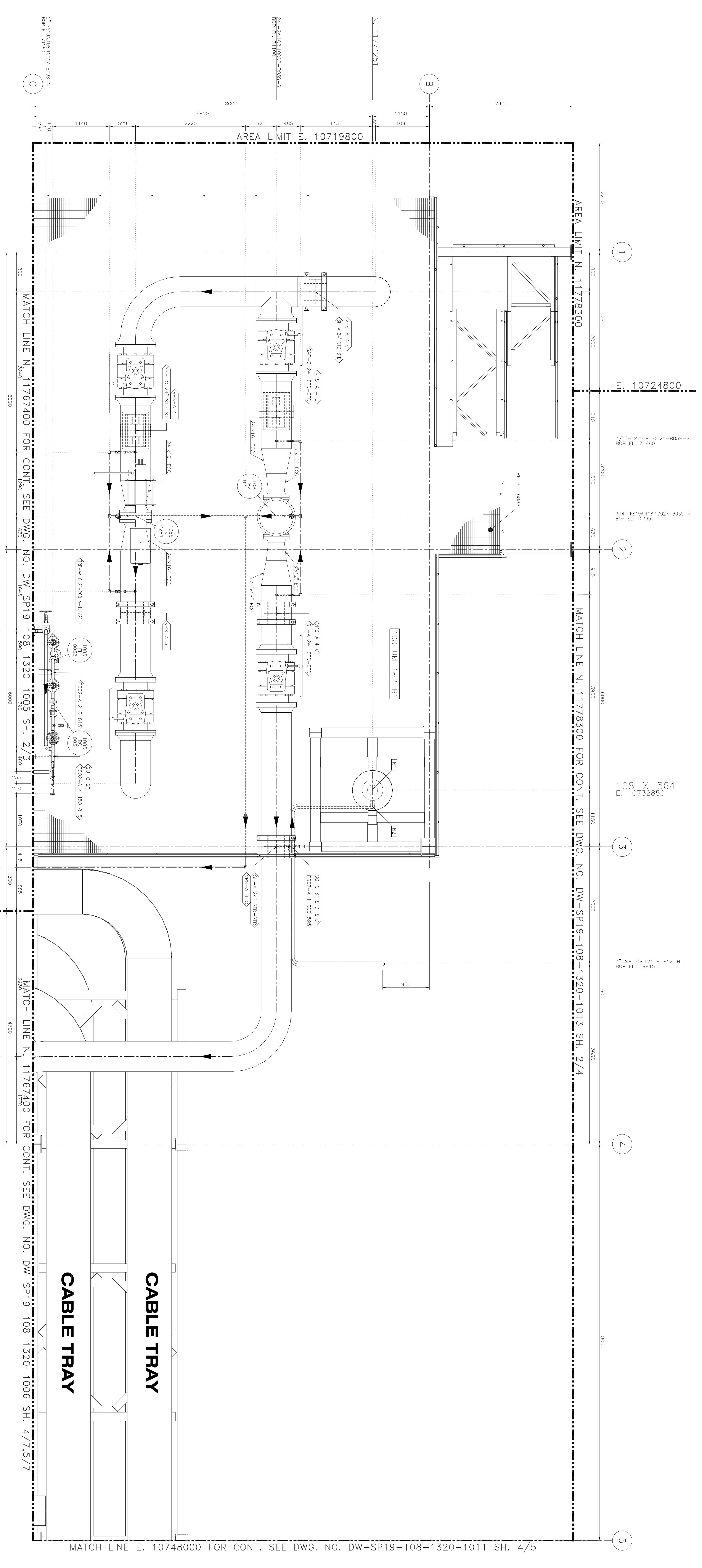
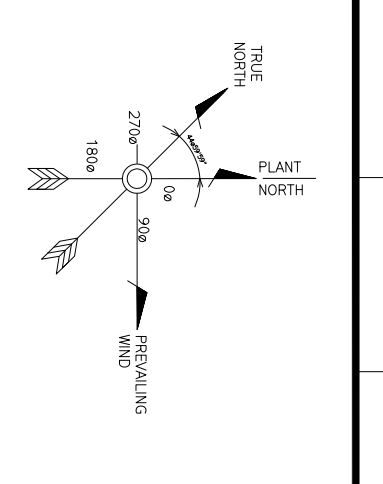
MARJAN HANJALI
 PIPING ENGINEER

SHARAF
 CHECKER

TOFC

TITLE: UNIT 108 TRAIN 1&2
 SULPHUR RECOVERY PIPING PLAN
 AREA 110
 (EL. 65500 TO 68000)

DWG. No.: DW-SP19-108-1320-1010
 SIZE: A0
 SHEET No.: 3 OF 5
 REV: 1

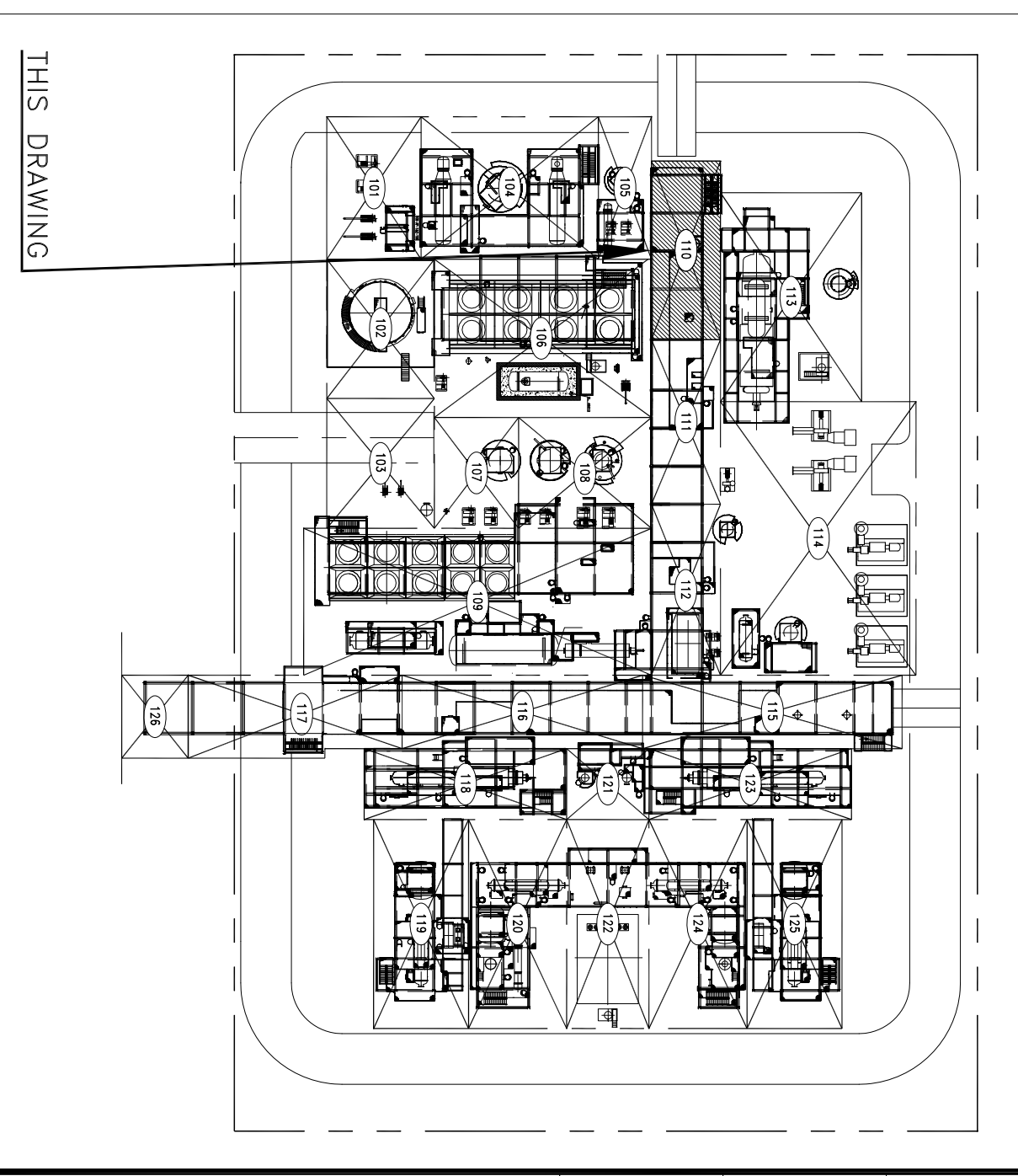
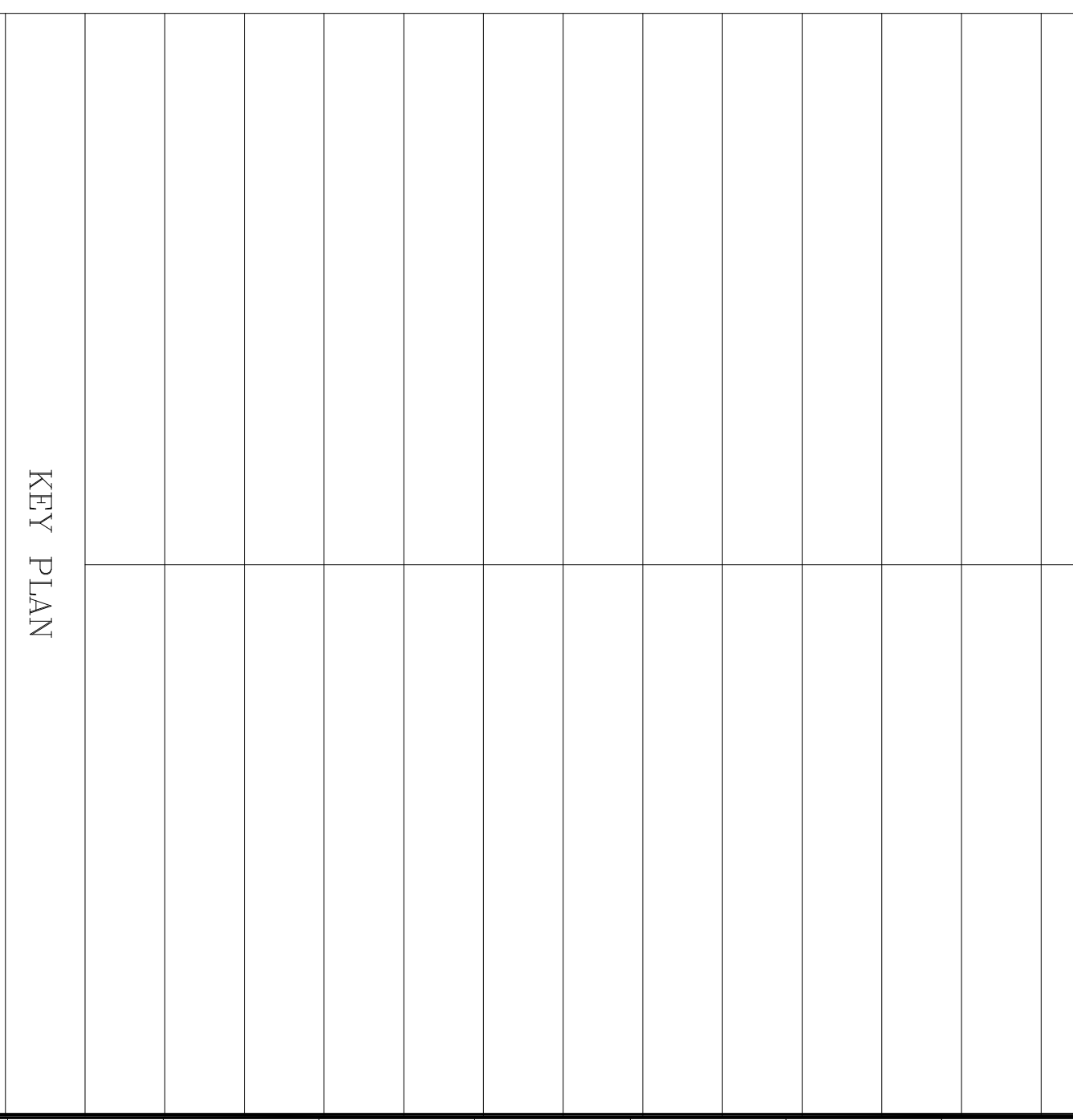


PLAN EL. 6800 TO ABOVE
(FOR LOWER PLAN SEE DWG. NO. DW-SP19-108-1320-1008 SH. 3/5)

- GENERAL NOTES**
- 1- ALL DIMENSIONS AND COORDINATES ARE IN MM.
 - 2- ALL DIMENSIONS AND COORDINATES ARE REFERRED TO THE 0.000 M (A.S.L.)
 - 3- ALL ELEVATION ARE IN MM AND ARE REFERRED TO THE 0.000 M (A.S.L.)
 - 4- ALL DIMENSIONS ARE REFERRED TO THE 0.000 M (A.S.L.)
 - 5- WHEN THERE IS A DISCREPANCY BETWEEN MM & PIPING PLAN, ISOMETRICS WILL GOVERN.
 - 6- ALL DIMENSIONS ARE REFERRED TO THE 0.000 M (A.S.L.)
 - 7- ALL DIMENSIONS ARE REFERRED TO THE 0.000 M (A.S.L.)
 - 8- ALL DIMENSIONS ARE REFERRED TO THE 0.000 M (A.S.L.)
 - 9- TOC = TOP OF CONCRETE
 - 10- PE = PLATE FORM
 - 11- WP = WORKING POINT

REFERENCE DRAWINGS

| REFERENCE DRAWINGS | DWG NO. |
|------------------------------|-----------------------|
| 1- UNIT PLOT PLAN | DW-SP19-108-0060-1001 |
| 2- PIPING PLAN DRAWING INDEX | DW-SP19-108-1310-1001 |



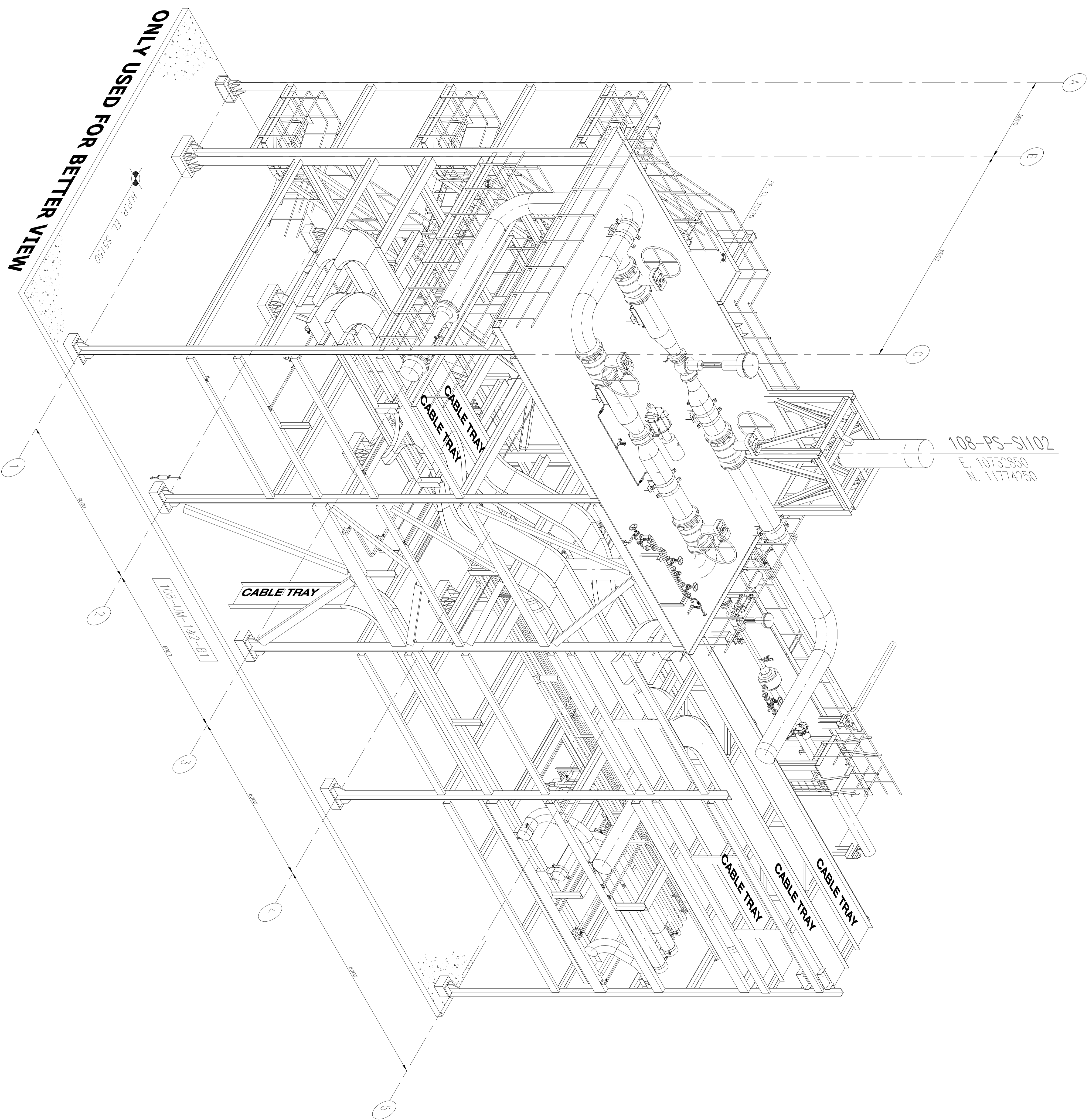
| REV. | DATE | DESCRIPTION | BY | CHKD. | APP. | DATE |
|------|-----------|---------------------------|--------|---------|-------|-----------|
| 1 | 19-AUG-13 | APPROVED FOR CONSTRUCTION | MADANI | HANJALI | REDAI | 19-AUG-13 |
| 0 | 13-AUG-11 | ISSUED FOR INFORMATION | MADANI | HANJALI | REDAI | 13-AUG-11 |

SOUTH PARS GAS FIELD DEVELOPMENT
PHASE 19, TOMBAK-IRAN
ONSHORE FACILITIES
N.I.O.C.
PARS OIL AND GAS COMPANY

CONTRACT No.: F06C-055-88-85
 DOC. CLASS: 3
 SCALE: 1/33.33

UNIT 108 TEAM I&E
SUPPLIER REQUEST PIPING PLAN
 (EL. 6800 TO ABOVE)

DWG No.: DW-SP19-108-1320-1010
 SIZE: A0
 SHEET No.: 4 OF 5
 REV: 1



108-PS-S102
E. 10732850
N. 11774250

ONLY USED FOR BETTER VIEW

- GENERAL NOTES
- 1- ALL DIMENSIONS AND COORDINATES ARE IN MM.
 - 2- ALL COORDINATES = PLANT COORDINATES.
 - 3- ALL ELEVATION ARE IN MM AND ARE REFERRED TO D.O.M (A.S.L.).
 - 4- ALL DIMENSIONS ARE TO FACE UNLESS OTHERWISE SPECIFIED.
 - 5- WHEN THERE IS A DISCREPANCY BETWEEN ISOMETRICS & PIPING PLAN, ISOMETRICS WILL GOVERN.
 - 6- ALL TERMINATED PIPES TO EQUIPMENT NOZZLES AS WELL AS INSTRUMENTATION POINTS SHALL BE AS INSTALLED PER SUPPLYING VENDORS DATA.
 - 7- ROTARY EQUIPMENTS AND AIR COOLERS ARE UNDER HOLD.
 - 8- TOS = TOP OF STEEL.
 - 9- TOC = TOP OF CONCRETE.
 - 10- POC = POINT OF CONNECTION.
 - 11- WP = WORKING POINT.

REFERENCE DRAWINGS

| REF. NO. | DWG NO. |
|----------|-----------------------|
| 1- | DW-SPI9-108-0060-1001 |
| 2- | DW-SPI9-108-1310-1001 |



| REV. | DATE | DESCRIPTION | ORIG. | CHKD. | APP'D. | PROJ. ENG. |
|------|-----------|---------------------------|--------|--------|--------|------------|
| 1 | 19-AUG-11 | APPROVED FOR CONSTRUCTION | NASRAN | BAHRAM | BAHRAM | XXX |
| 0 | 9-AUG-11 | ISSUED FOR SUBMITTAL | NASRAN | BAHRAM | BAHRAM | XXX |

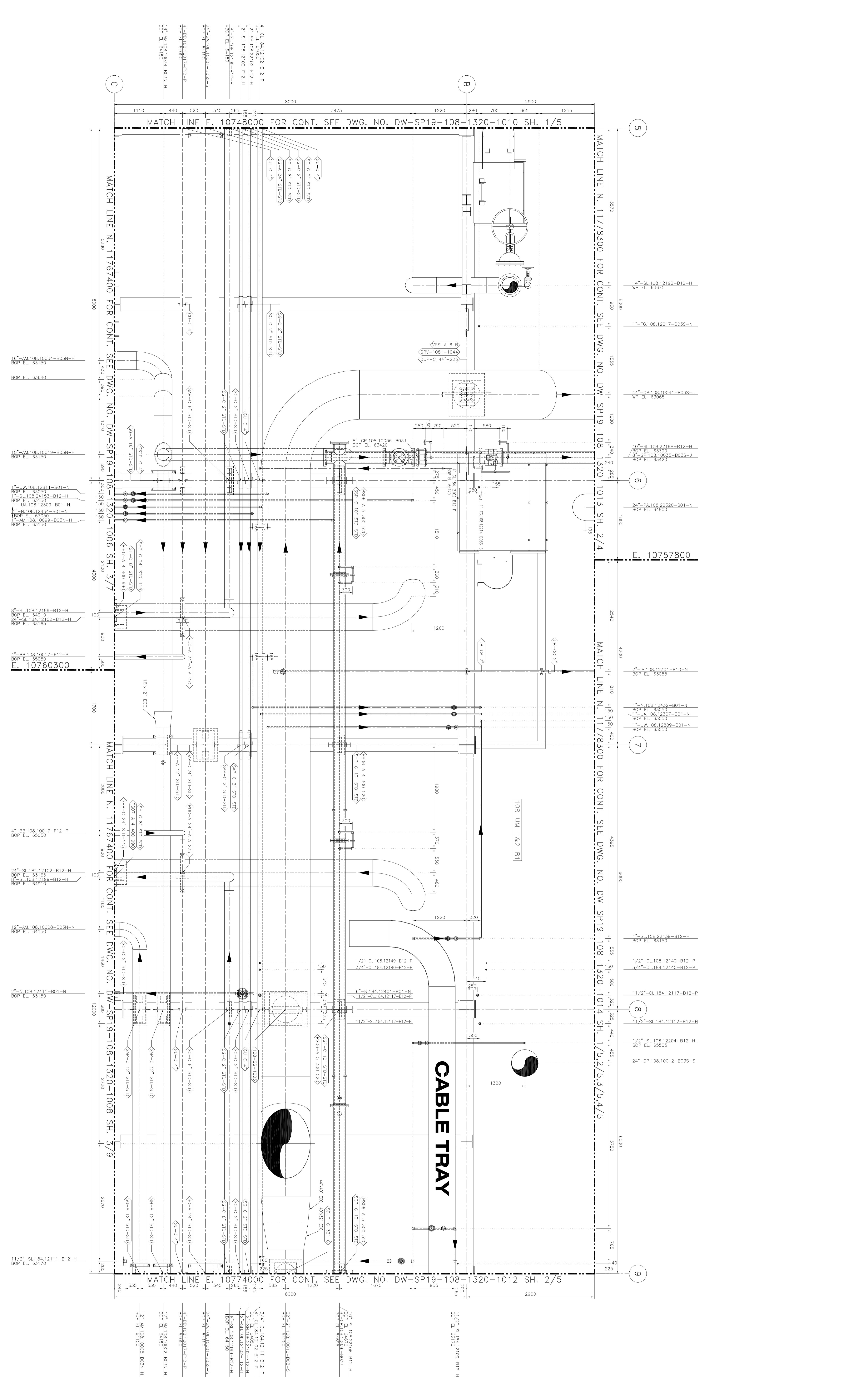
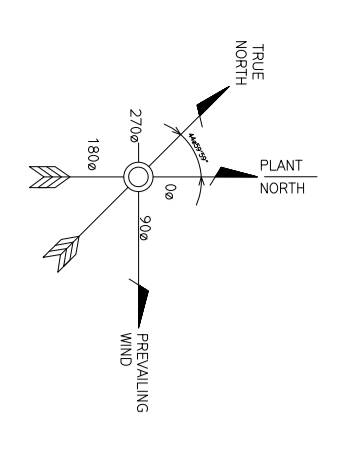
SOUTH PARS GAS FIELD DEVELOPMENT
PHASE 19, TOMBAK-HRAN
ONSHORE FACILITIES

N.I.O.C
PARS OIL AND GAS COMPANY

CONTRACT NO.: PGGC-655-89-38 DOC. CLASS: 3 SCALE: ---

TITLE: UNIT 108 TRAIN 1&2
SULPHUR RECOVERY PIPING PLAN
AREA 110
ISOMETRIC VIEW

DWG No.: DW-SPI9-108-1310-1010 SIZE: A0 SHEET No.: 9 OF 9 REV: 1

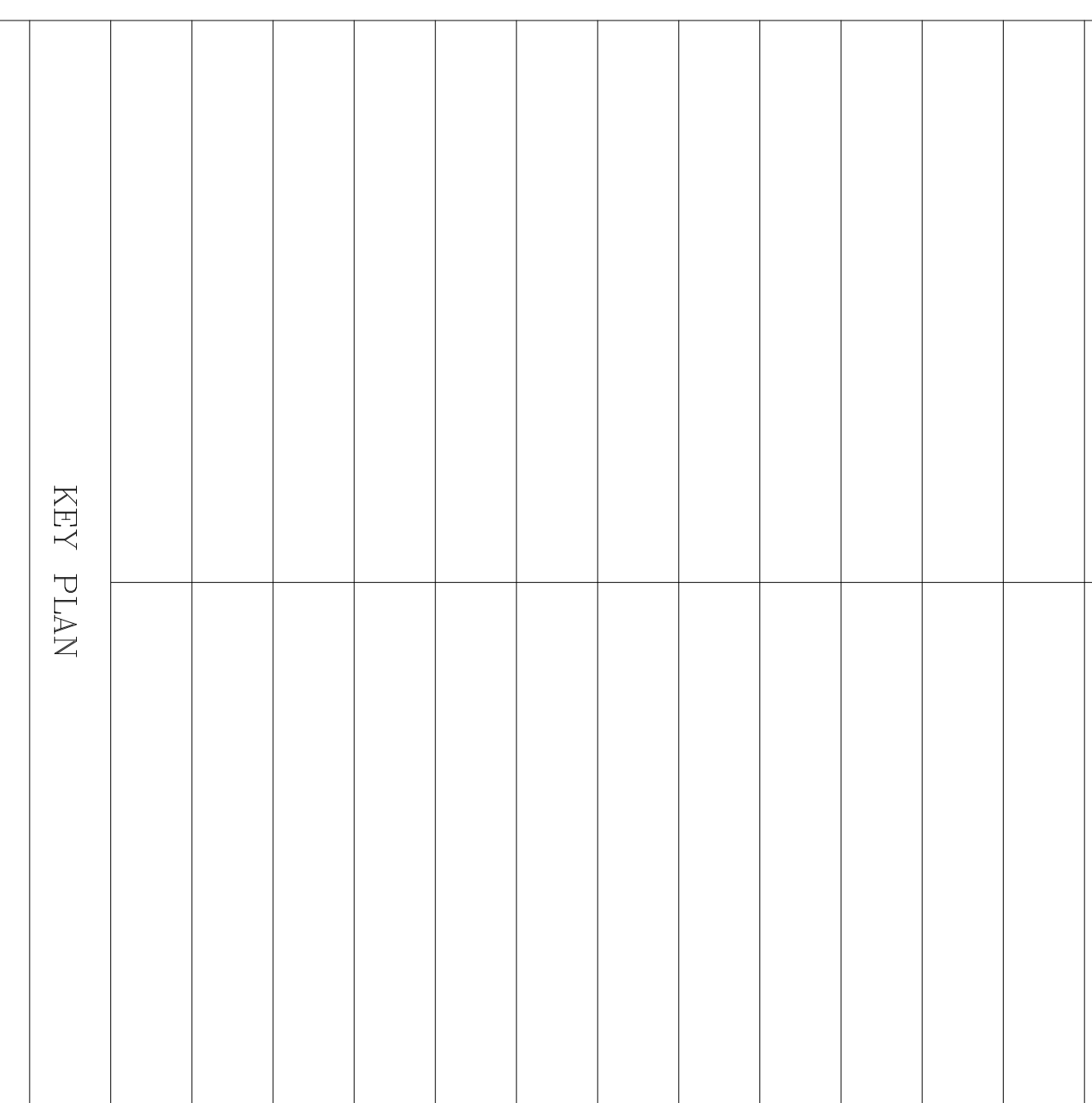


PLAN EL. 63000 TO 65500
 (FOR LOWER PLAN SEE DWG. NO. DW-SP19-108-1320-1011 SH. 1/3)
 (FOR UPPER PLAN SEE DWG. NO. DW-SP19-108-1320-1011 SH. 3/3)

- GENERAL NOTES**
- 1- ALL DIMENSIONS AND COORDINATES ARE IN MM.
 - 2- ALL COORDINATES = PLANT COORDINATES
 - 3- ALL ELEVATIONS ARE IN MM AND ARE REFERRED TO 0.0 MM (A.M.S.L.)
 - 4- WHEN THERE IS A DISCREPANCY BETWEEN DIMENSIONS & PIPING PLAN, DIMENSIONS WILL GOVERN.
 - 5- ALL TERMINATED PIPES TO EQUIPMENT NOZZLES AS WELL AS INSTRUMENTATIONS, DRIVING VENDORS DATA ROTARY EQUIPMENTS AND AIR COOLERS ARE UNDER HOLD.
 - 6- TOS = TOP OF STEEL.
 - 7- TOC = TOP OF CONCRETE
 - 8- TP = PLAN FORM
 - 9- WP = WORKING POINT

REFERENCE DRAWINGS

| DWG. NO. | DWG. NO. |
|------------------------------|-----------------------|
| 1- UNIT PLOT PLAN | DW-SP19-108-0060-1001 |
| 2- PIPING PLAN DRAWING INDEX | DW-SP19-108-1310-1001 |



| REV. | DATE | DESCRIPTION | ORIG. | CHKD. | APPR. | DATE | DESCRIPTION | ORIG. | CHKD. | APPR. |
|------|-----------|---------------------------|----------------|-----------------|----------------|-----------|---------------------------|----------------|-----------------|----------------|
| 1 | 19-AUG-13 | APPROVED FOR CONSTRUCTION | MARJAN HANJANI | SHAHBAZ FARDOSI | MARJAN HANJANI | 19-AUG-13 | APPROVED FOR CONSTRUCTION | MARJAN HANJANI | SHAHBAZ FARDOSI | MARJAN HANJANI |
| 0 | 3-MAR-11 | ISSUED FOR INSTALLATION | MARJAN HANJANI | SHAHBAZ FARDOSI | MARJAN HANJANI | 3-MAR-11 | ISSUED FOR INSTALLATION | MARJAN HANJANI | SHAHBAZ FARDOSI | MARJAN HANJANI |

SOUTH PARS GAS FIELD DEVELOPMENT
 PHASE 19, TOMBAK-IRAN
 ONSHORE FACILITIES
 N.O.C.
 PARS OIL AND GAS COMPANY

CONTRACT No.: POGC-655-89-35 DQC. CLASS: 3 SCALE: 1/33.33

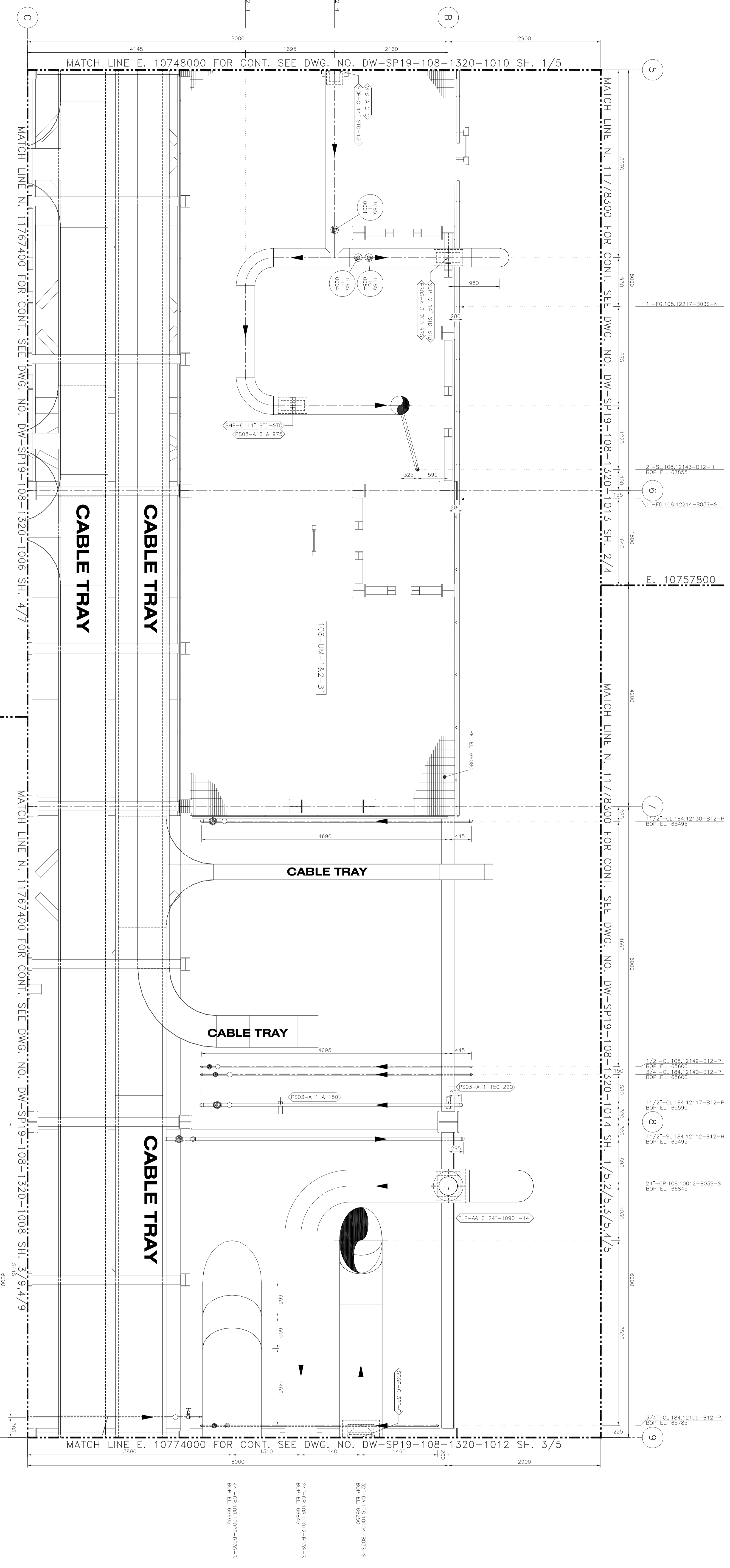
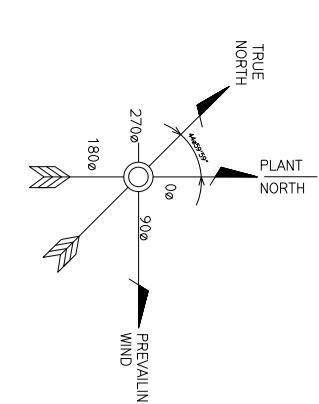
MARJAN HANJANI
 Technical Director

PIPT
 Pars Oil and Gas Company

TOFC
 Pars Oil and Gas Company

TITLE: UNIT 108 TRAIN 1&2
 SULPHUR RECOVERY PIPING PLAN
 AREA 111
 (EL. 63000 TO 65500)

DWG No.: DW-SP19-108-1320-1011 SIZE: A0 SHEET No.: 2 OF 5 REV. 1

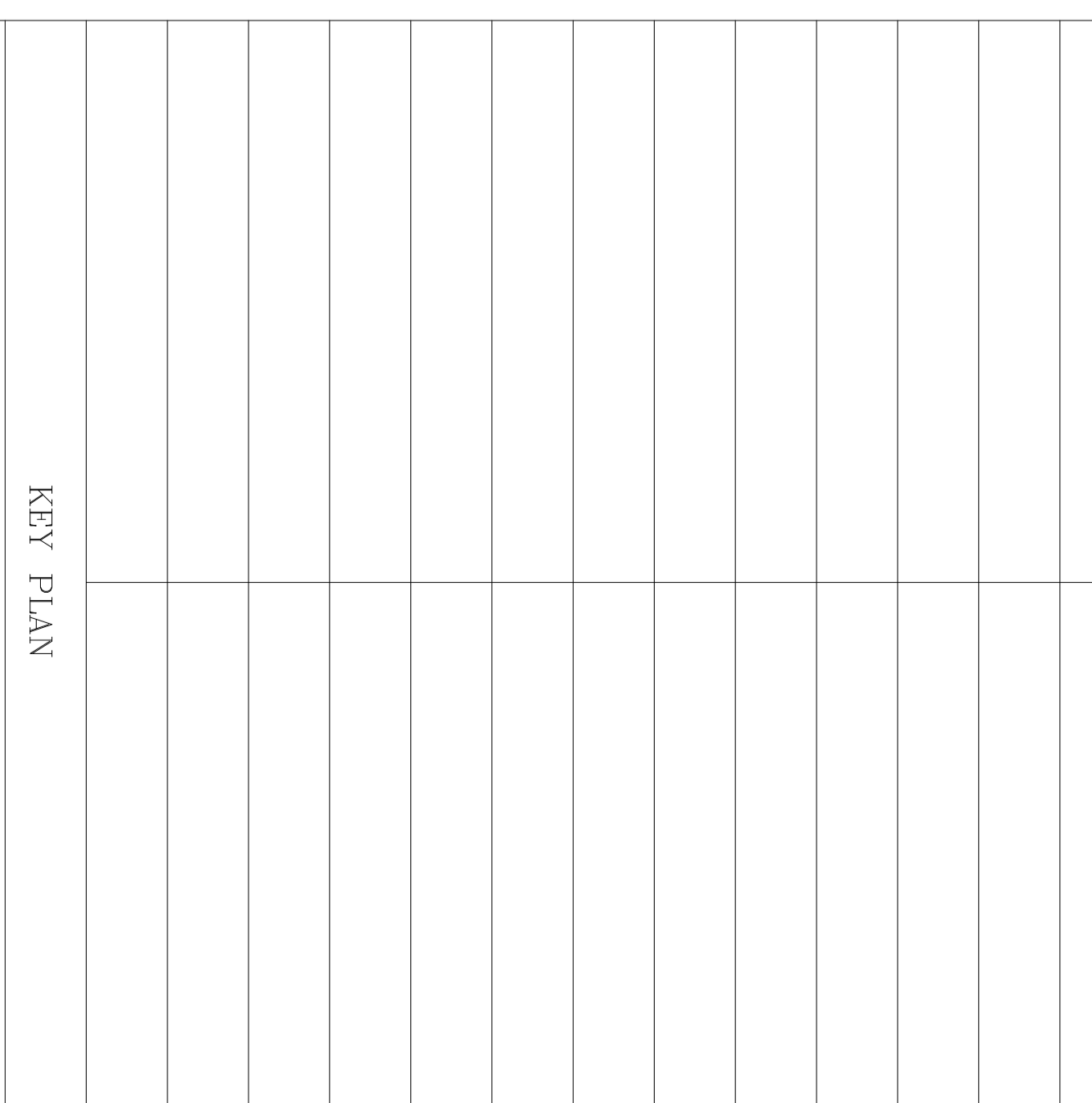


PLAN EL. 65900 TO 88000
 (FOR LOWER PLAN SEE DWG NO. DW-SP19-108-1320-1011 SH. 2/3)
 (FOR UPPER PLAN SEE DWG NO. DW-SP19-108-1320-1011 SH. 4/3)

- GENERAL NOTES**
- 1- ALL DIMENSIONS AND COORDINATES ARE IN MM.
 - 2- ALL COORDINATES = PLANT COORDINATES
 - 3- ALL ELEVATION ARE IN MM AND ARE REFERRED TO 0.0 MM (A.M.S.L.)
 - 4- WHEN THERE IS A DISCREPANCY BETWEEN THE PIPING PLAN & PIPING PLAN ISOMETRICS WILL GOVERN
 - 5- ALL TERMINATED PIPES TO EQUIPMENT NOZZLES AS WELL AS INSTRUMENTATIONS USING VENDORS DATA
 - 6- ROTARY EQUIPMENTS AND AIR COOLERS ARE UNDER HOLD.
 - 7- TOC = TOP OF STEEL.
 - 8- TOS = TOP OF CONCRETE
 - 9- TP = PLAN FORM
 - 10- WF = WORKING POINT

REFERENCE DRAWINGS

| DWG NO. | DWG NO. |
|------------------------------|-----------------------|
| 1- UNIT PLOT PLAN | DW-SP19-108-0060-1001 |
| 2- PIPING PLAN DRAWING INDEX | DW-SP19-108-1310-1001 |



THIS DRAWING

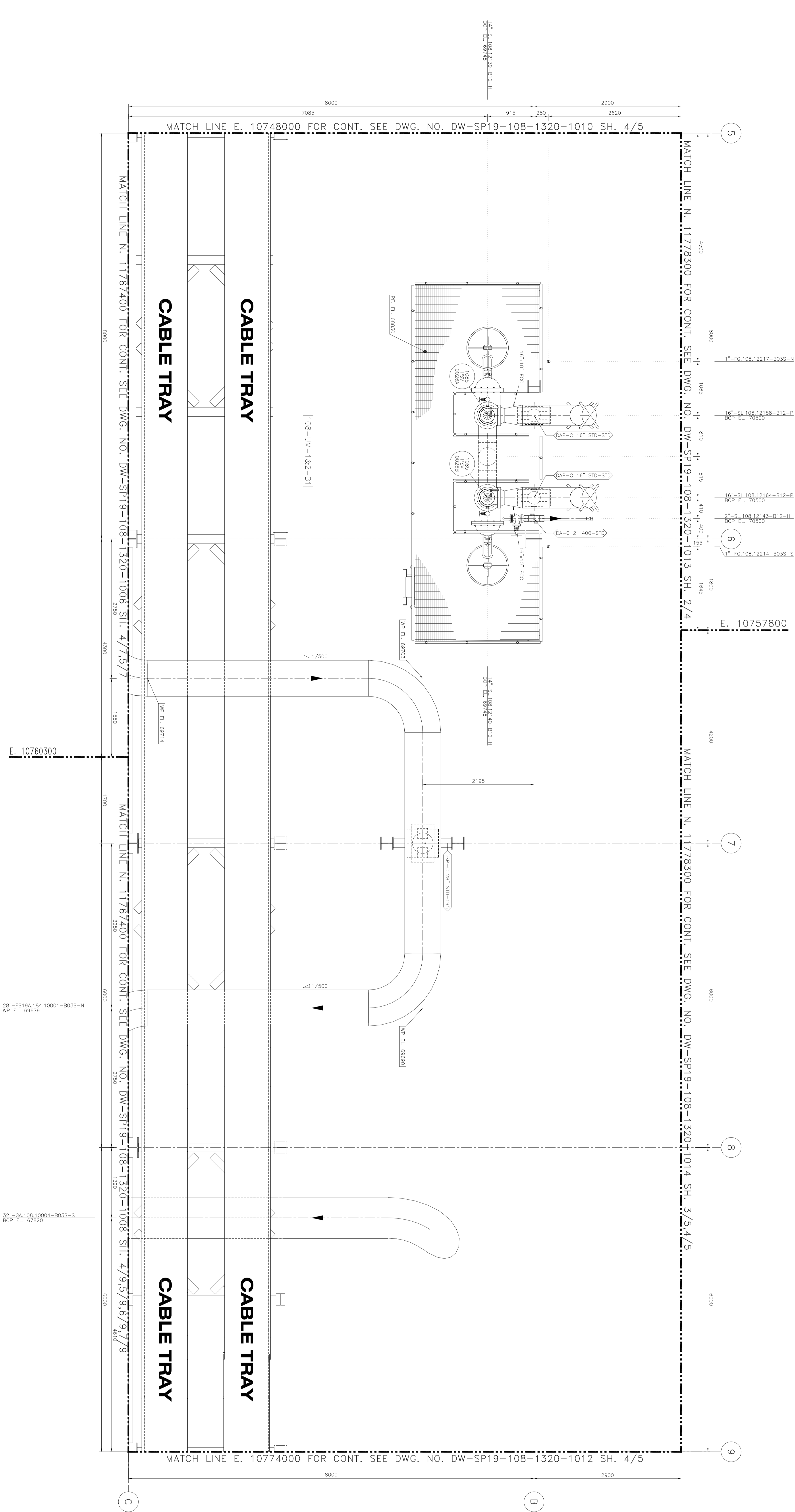
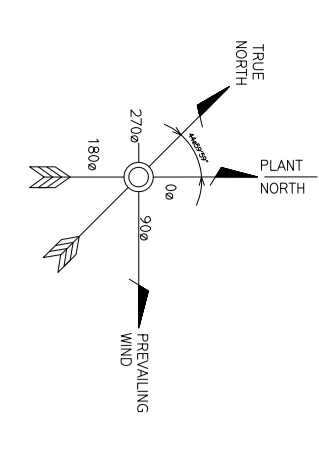
| NO. | DATE | DESCRIPTION | BY | CHECKED | APPROVED |
|-----|-----------|----------------------------|----------------|--------------------------|----------|
| 1 | 19-AUG-13 | APPROVED FOR CONSTRUCTION | MARJAN HANJANI | SHAHBAZ PARSPOUR HANJANI | XXX |
| 2 | 3-MAR-11 | ISSUED FOR INSTRUMENTATION | MARJAN HANJANI | SHAHBAZ PARSPOUR HANJANI | XXX |

SOUTH PARS GAS FIELD DEVELOPMENT
PHASE 19, TOMBAK-IRAN
ONSHORE FACILITIES
N.O.C.
PARS OIL AND GAS COMPANY

CONTRACT No.: POGC-655-89-35 DQC. CLASS: 3 SCALE: 1/33.33

TITLE: UNIT 108 TRAIN 1&2 SULPHUR RECOVERY PIPING PLAN (EL. 65900 TO 68000)

DWG No.: DW-SP19-108-1320-1011 SIZE: A0 SHEET No.: 3 OF 5 REV: 1



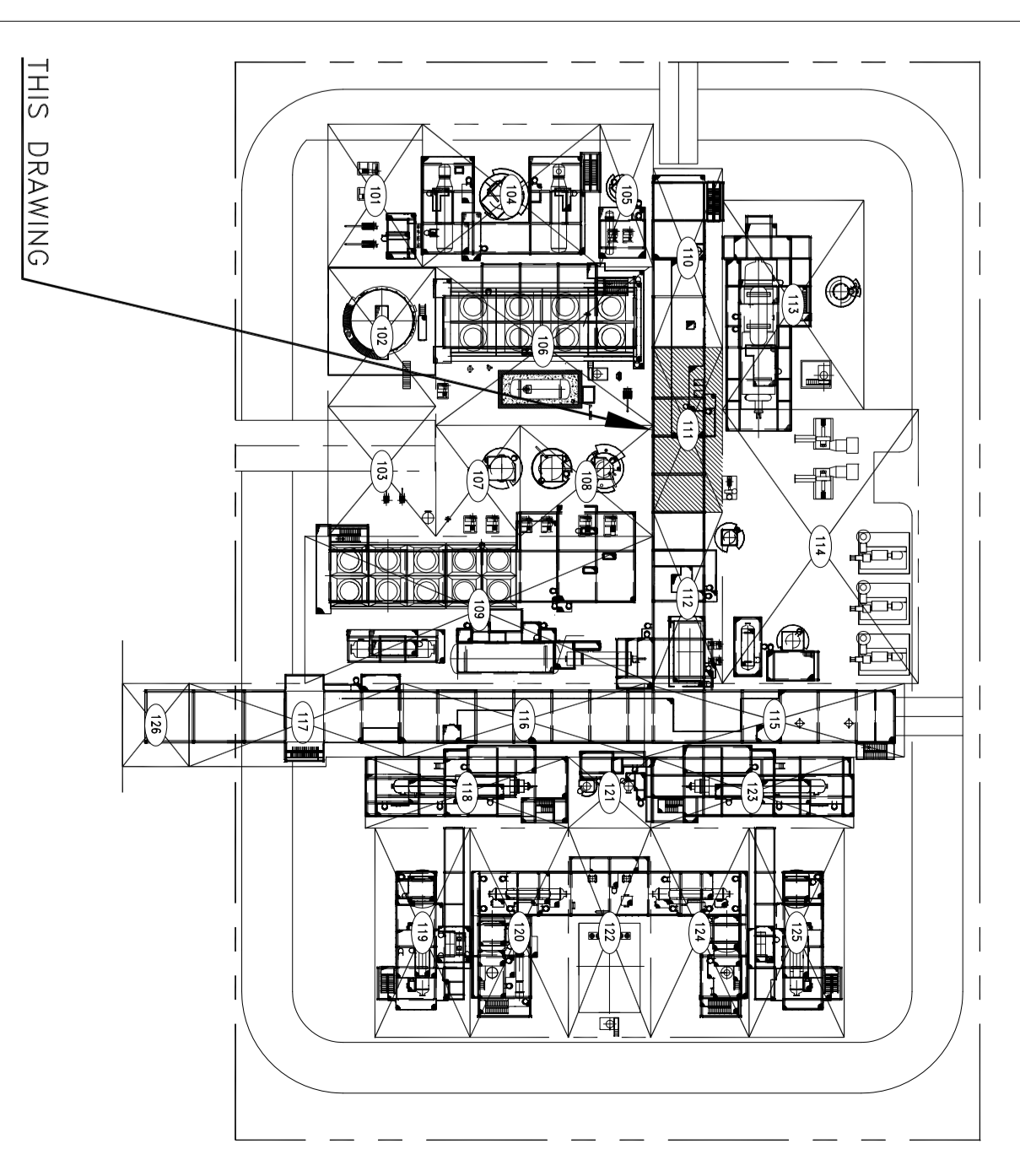
PLAN EL. 68000 TO ABOVE
 (FOR LOWER PLAN SEE DWG. NO. DW-SP19-108-1320-1011 SH. 3/5)

GENERAL NOTES

- 1- ALL DIMENSIONS AND COORDINATES ARE IN MM.
- 2- ALL COORDINATES = PLANT COORDINATES
- 3- ALL ELEVATION ARE IN MM AND ARE REFERRED TO 0.0 MM (A.M.S.L.)
- 4- ALL DIMENSIONS AND COORDINATES ARE REFERRED TO 0.0 MM (A.M.S.L.)
- 5- WHEN THERE IS A DISCREPANCY BETWEEN DIMENSIONS & PIPING PLAN, DIMENSIONS WILL GOVERN.
- 6- ALL TERMINATED PIPES TO EQUIPMENT NOZZLES AS WELL AS INSTRUMENTATIONS SHALL BE UNDER HOLD.
- 7- ROTARY EQUIPMENTS AND AIR COOLERS ARE UNDER HOLD.
- 8- TOS = TOP OF STEEL.
- 9- TOC = TOP OF CONCRETE
- 10- TP = PLAN FORM
- 11- WP = WORKING POINT

| REFERENCE DRAWINGS | DWG. NO. |
|------------------------------|-----------------------|
| 1- UNIT PLOT PLAN | DW-SP19-108-0060-1001 |
| 2- PIPING PLAN DRAWING INDEX | DW-SP19-108-1310-1001 |

KEY PLAN



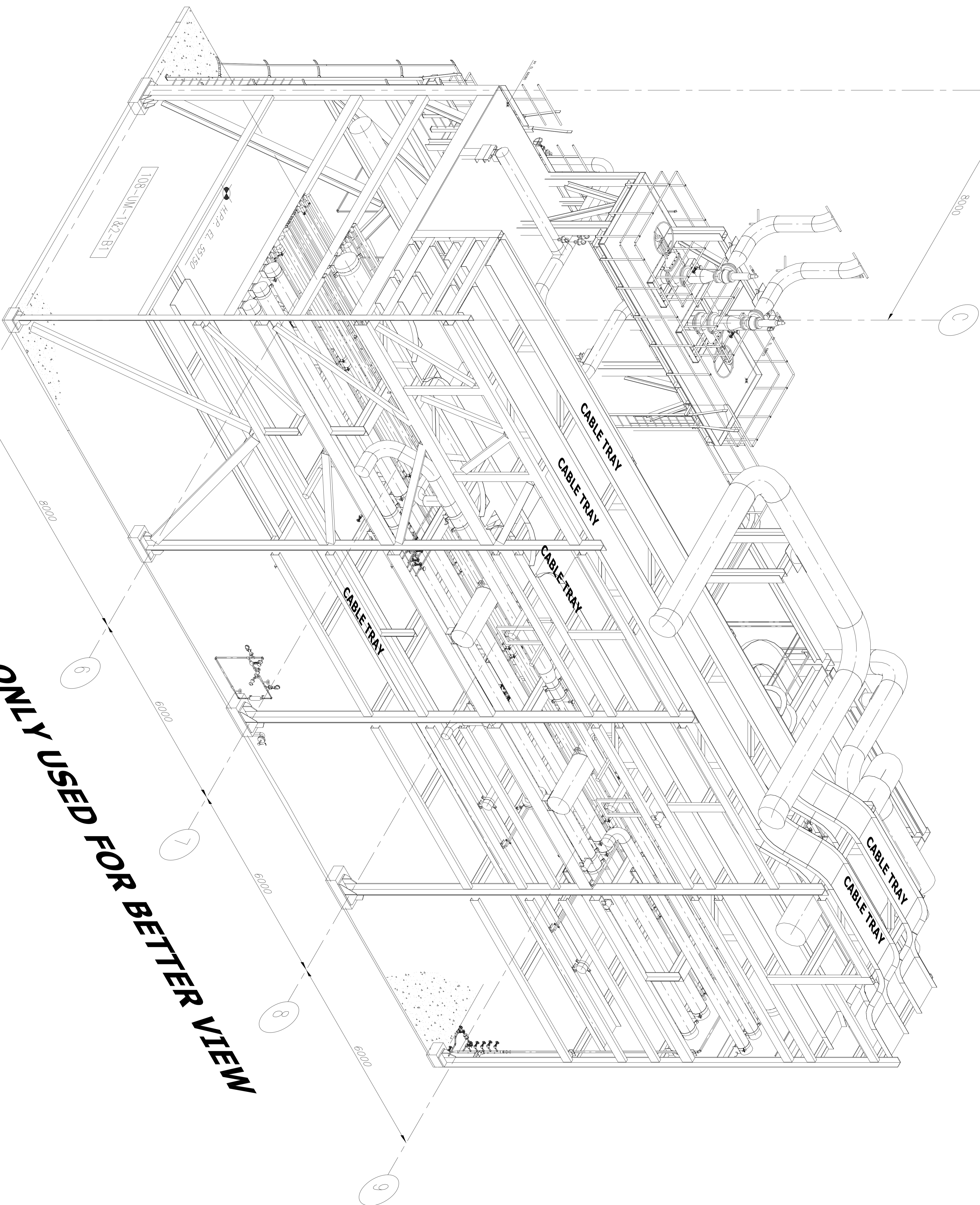
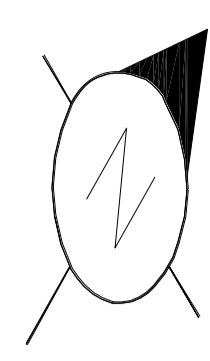
| REV. | DATE | DESCRIPTION | ORIG. | PREP. | CHKD. | APPR. | APPROVED FOR CONSTRUCTION | SCALE |
|------|-----------|---------------------------|------------------|---------|---------|---------|---------------------------|-------|
| 1 | 19-AUG-13 | APPROVED FOR CONSTRUCTION | MARCAN (IRANIAN) | IRANIAN | IRANIAN | IRANIAN | XXX | XXX |
| 0 | 3-AUG-11 | ISSUED FOR INSTALLATION | MARCAN (IRANIAN) | IRANIAN | IRANIAN | IRANIAN | XXX | XXX |

SOUTH PARS GAS FIELD DEVELOPMENT
 PHASE 19, TOMBAK-IRAN
 ONSHORE FACILITIES
 N. I. O. C.
 PARS OIL AND GAS COMPANY

CONTRACT No.: POGC-655-88-35
 DDC. CLASS: 3
 SCALE: 1/33.33

TITLE: UNIT 108 TRAIN 1&2
 SULPHUR RECOVERY PIPING PLAN
 AREA 111
 (EL. 68000 TO ABOVE)

DWG No.: DW-SP19-108-1320-1011
 SIZE: A0
 SHEET No.: 4 OF 5
 REV: 1

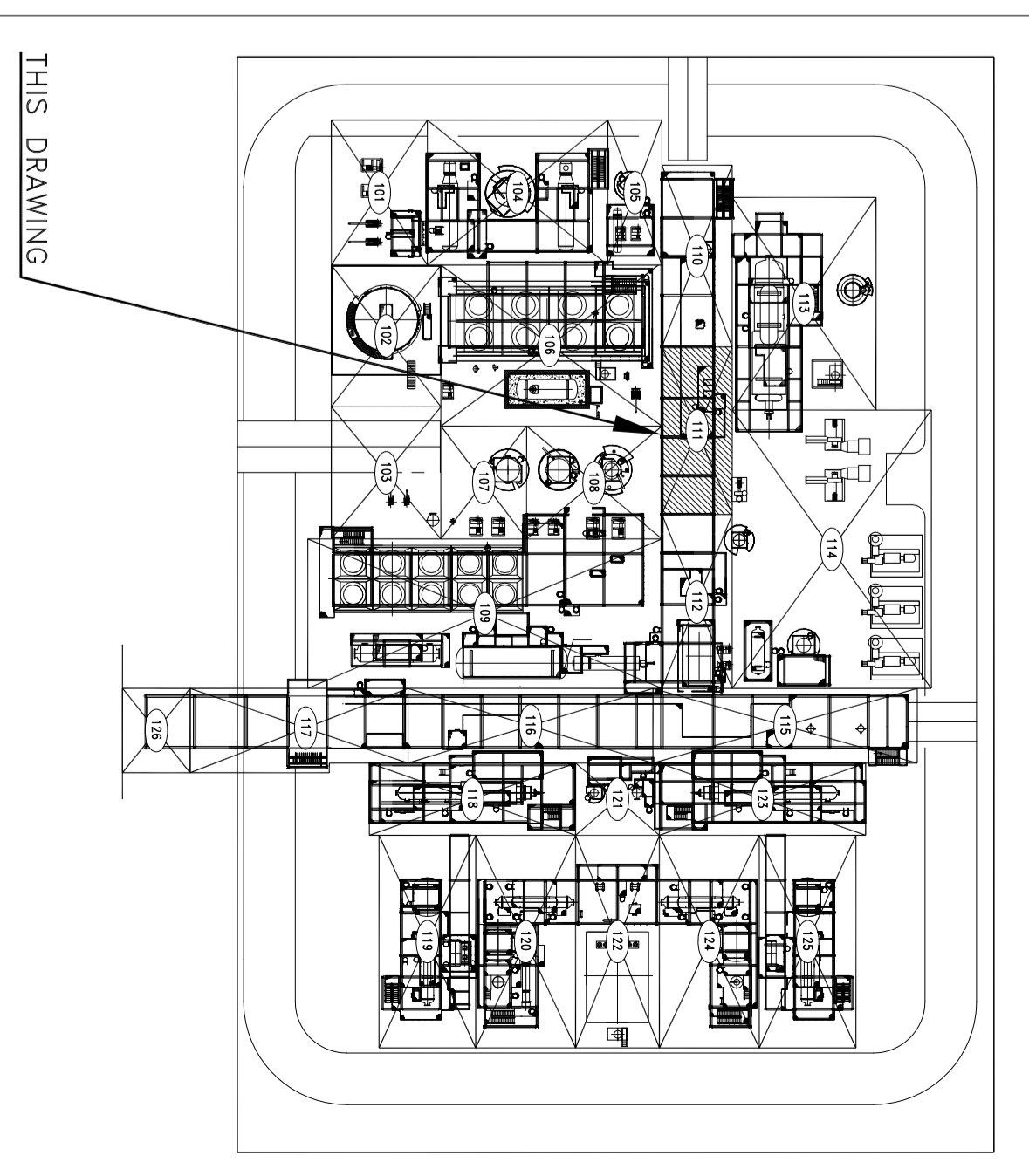


ONLY USED FOR BETTER VIEW

- GENERAL NOTES
- 1- ALL DIMENSIONS AND COORDINATES ARE IN MM.
 - 2- ALL COORDINATES = PLANT COORDINATES.
 - 3- ALL ELEVATION ARE IN MM AND ARE REFERRED TO D.O.M (A.S.L).
 - 4- ALL DIMENSIONS ARE TO THE CENTERLINE UNLESS OTHERWISE SPECIFIED.
 - 5- WHEN THERE IS A DISCREPANCY BETWEEN ISOMETRICS & PIPING PLAN, ISOMETRICS WILL GOVERN.
 - 6- ALL TERMINATED PIPES TO EQUIPMENT NOZZLES AS WELL AS INSTRUMENTATION POINTS SHALL BE INSTALLED WITH THE CORRECT VENDOR DATA.
 - 7- ROTARY EQUIPMENTS AND AIR COOLERS ARE UNDER HOLD.
 - 8- TOS = TOP OF STEEL.
 - 9- TOC = TOP OF CONCRETE.
 - 10- TPC = TOP OF CONCRETE.
 - 11- WP = WORKING POINT.

| REFERENCE DRAWINGS | DWG NO. |
|------------------------------|-----------------------|
| 1- UNIT PLOT PLAN | DW-SPI9-108-0060-1001 |
| 2- PIPING PLAN DRAWING INDEX | DW-SPI9-108-1310-1001 |

| NO. | DATE | DESCRIPTION | ORIG. | CHKD. | APPROVED | PROJ. ENG. | SCALE |
|-----|-----------|---------------------------|--------|---------|----------|------------|-------|
| 1 | 19-AUG-11 | APPROVED FOR CONSTRUCTION | NASRAN | BAHMANI | BAHMANI | BAHMANI | XXX |
| 0 | 9-AUG-11 | SHED FOR INFORMATION | NASRAN | BAHMANI | BAHMANI | BAHMANI | XXX |



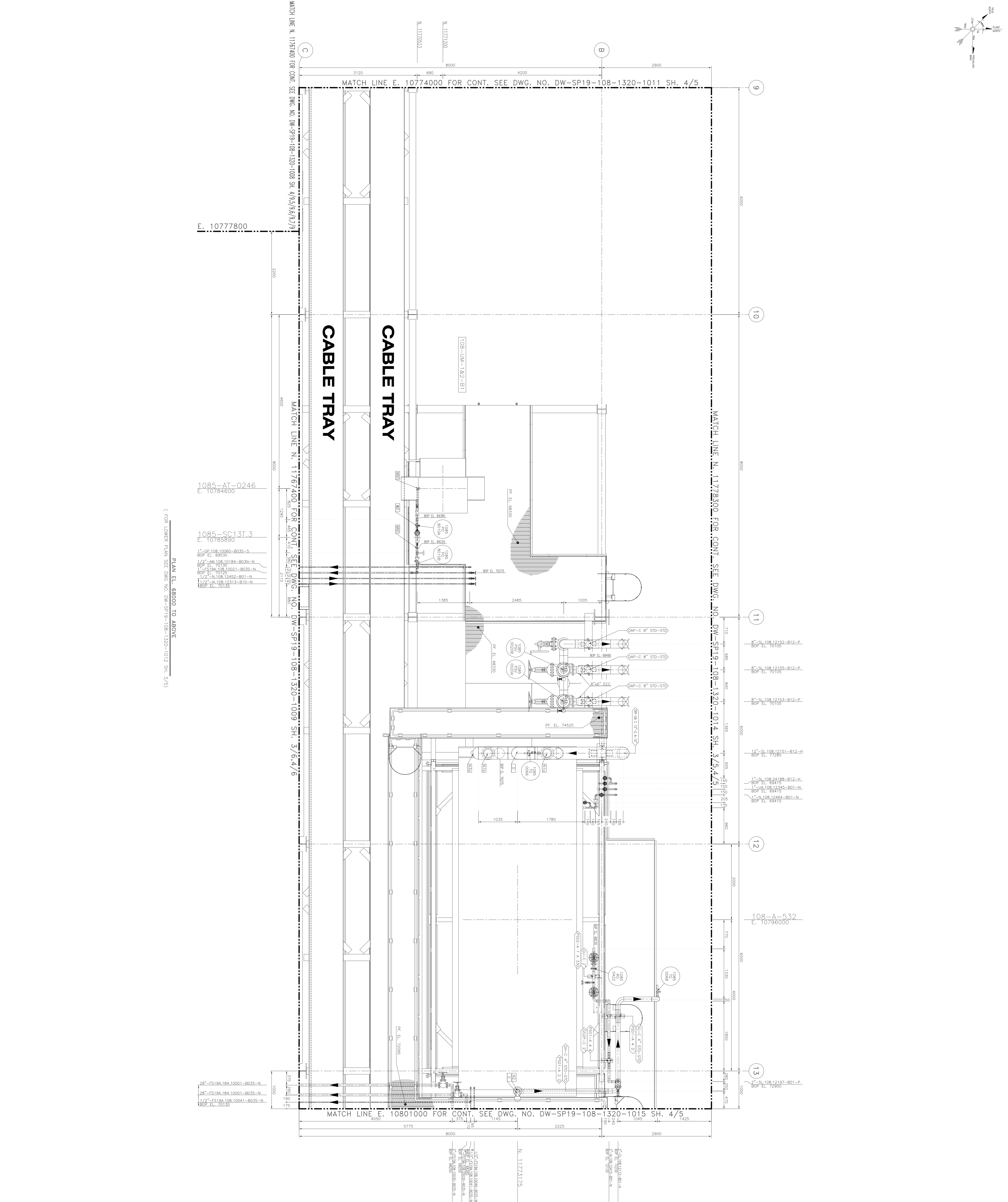
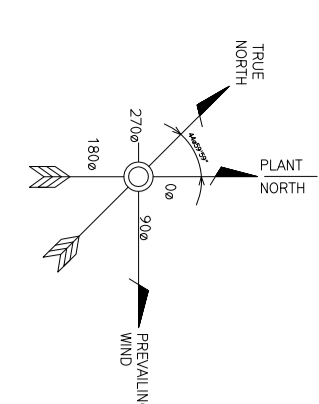
SOUTH PARS GAS FIELD DEVELOPMENT
 PHASE 19, TOMBAR-HRAN
 ONSHORE FACILITIES

N.I.O.C.
 PARS OIL AND GAS COMPANY

CONTRACT NO.: PGGC-655-89-38 DOC. CLASS: 3 SCALE: ---

TITLE: UNIT 108 TRAIN 1&2
 SULPHUR RECOVERY PIPING PLAN
 AREA 111
 ISOMETRIC VIEW

DWG No.: DW-SPI9-108-1320-1011 SIZE: A0 SHEET No.: 9 OF 9 REV: 1



GENERAL NOTES

- 1- ALL DIMENSIONS AND COORDINATES ARE IN MM.
- 2- ALL COORDINATES = PLANT COORDINATES
- 3- ALL ELEVATIONS ARE IN MM AND ARE REFERRED TO 0.0 MM (A.M.S.L.)
- 4- WHEN THERE IS A DISCREPANCY BETWEEN THE PIPING PLAN & PIPING PLAN ISOMETRICS WILL GOVERN
- 5- ALL TERMINATED PIPES TO EQUIPMENT NOZZLES AS WELL AS INSTRUMENTATIONS SHALL BE PROVIDED WITH ROTARY EQUIPMENTS AND AIR COOLERS ARE UNDER HOLD.
- 6- TOS = TOP OF STEEL.
- 7- TOC = TOP OF CONCRETE
- 8- WF = PLAN FORM
- 9- WP = WORKING POINT

REFERENCE DRAWINGS

| | |
|------------------------------|-------------------------------|
| 1- UNIT PLOT PLAN | DWG NO. DW-SP19-108-0060-1001 |
| 2- PIPING PLAN DRAWING INDEX | DW-SP19-108-1310-1001 |

KEY PLAN

THIS DRAWING

| REV | DATE | DESCRIPTION | ORIG | CHKD | APPR | DATE | BY | CHKD | APPR |
|-----|----------|---------------------------|--------|---------|---------|----------|-----|------|------|
| 1 | 19-04-21 | APPROVED FOR CONSTRUCTION | MARCAN | IRANIAN | IRANIAN | 19-04-21 | XXX | | |
| 0 | 3-04-21 | ISSUED FOR INFORMATION | MARCAN | IRANIAN | IRANIAN | 03-04-21 | XXX | | |

**SOUTH PARS GAS FIELD DEVELOPMENT
PHASE 19, TOMBAK-IRAN
ONSHORE FACILITIES**

N.I.O.C.
PARS OIL AND GAS COMPANY

| | | |
|------------------------------|---------------|----------------|
| CONTRACT No.: POGC-655-89-35 | DOC. CLASS: 3 | SCALE: 1/33.33 |
|------------------------------|---------------|----------------|

TITLE: UNIT 108 TRAIN 1&2
SULPHUR RECOVERY PIPING PLAN
(EL. 68000 TO ABOVE)

DWG No.: DW-SP19-108-1320-1012 SIZE: A0 SHEET No.: 4 OF 5 REV: 1